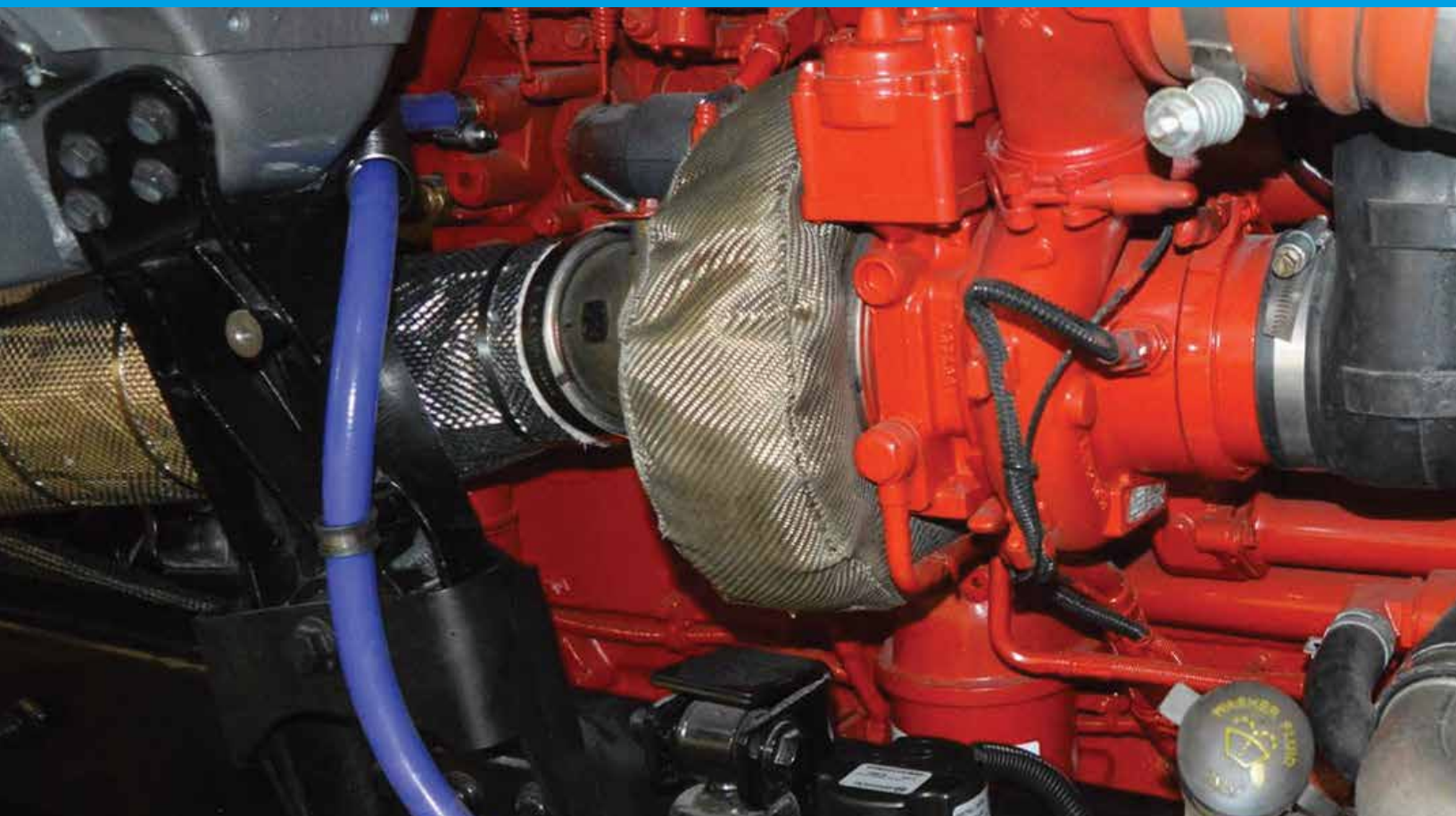




MARINE | INDUSTRIAL | OFF-HIGHWAY | AEROSPACE | TRUCKING



(844) 723-2665
WWW.HEATSHIELDPRODUCTS.COM

MISSION

"To deliver American made high performance insulation to solve problems caused by excessive heat."

STORY

Heatshield Products, Inc. has been serving the performance and racing industry since 1985, developing the highest quality heat insulation and thermal-barrier products at competitive prices. Our cutting-edge products include thermal protection for a variety of industries: automotive, motorcycle, marine, heavy duty, Department of Defense, industrial manufacturing, industrial welding and many more. And we're proud of our great customer service. Same day shipping if orders received by 12 PM PST.

FACTS

Heatshield Products doesn't employ marketing tricks or nonsense to sell products. We offer the correct operational temperature range of our thermal-barrier products, and we let you know each product's limitations. When shopping our extensive line of heat-resistant products, we make it easy for you to know the temperatures each one is capable of withstanding, without complicated and confusing technical jargon.

CAPABILITIES

What we do goes beyond engineering and manufacturing world-class thermal- and sound-barrier products. We offer consulting services for product design and improving the energy efficiency of the manufacturing process. Heatshield Products has extensive experience in solving thermal-barrier and protection problems for a variety of situations and environments. Heatshield Products also offers custom manufacturing and private label. We currently provide such programs to several OEM and aftermarket manufacturers.

CONTENTS

Exhaust Insulation

Heatshield Armor™	4
Premium Exhaust Wrap	5
HP Felt Shield™	5
Black Exhaust Wrap	6
Inferno Wrap™	6
OEM Jackets	7
Lava Turbo Shield™	7

HeatShield Barriers

HP Sticky Shield™	8
Lava Shield™	8
Inferno Shield™	9
Thermafect Shield™	9
Cobra Shield™	10
HP Heatshield Mat™	10

Heatshield Sleeveings

Thermafect Sleeve™	11
Fire Shield Sleeve™	12

Heatshield Tape & Fasteners

Thermal-Tie™	13
Thermafect Tape™	13

Heatshield Welding Products

HP Welding Pillow™	14
Glove Armor™	14
HP Torch Blanket™	15

Heatshield Armor™



1800°F
CONTINUOUS



2200°F
INTERMITTENT

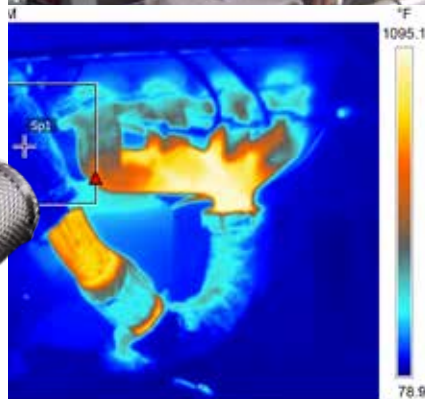
Heatshield Armor™ bridges the gap between a custom made exhaust shield and the DIY capability of an exhaust wrap. The outer aluminum “Armor” layer can take the abuse of the road – on or off and can be cleaned for inspections. The Armor is also great for applications where work or maintenance must be done in the engine room compartment – abrasion and itchiness are not an issue.

Bonded to the Armor layer is our Exclusive BioCool™ insulation, this makes it capable of withstanding 1,800 degrees F continuously. Heatshield Armor™ should be placed directly on exhaust systems, turbo manifolds, downpipes and diesel particulate filters (DPF). BioCool™ is a non-caustic, non-flammable thermal barrier. It does not cause itching and won't smoke or smell the first time it is heat-cycled. This makes it a far superior insulator compared to the clamp-on heatshields that allow heat to escape because they are set above the pipe and not directly insulating it. It is flexible, easy to cut (you can use a pair of heavy-duty scissors) and easy to install.

Heatshield Armor is far superior to exhaust wraps or lagging that require you to use a compound or hardener. It can sustain more temperature and can be installed in one step – no waiting for hardeners or resins on the lagging to dry. The outer aluminum layer may be painted with a high temperature paint before or after installation.

FEATURES

- Reduces radiant heat up to 70%
- May be cleaned after installation
- Water- and chemical-resistant
- Reduces underhood and engine room temperatures up to 60%
- 0.003-inch-thick armor layer



PART NO.	DESCRIPTION
HD17502	1/2 thk x 12 in x 5 ft
HD17504	1/2 thk x 12 in x 10 ft
HD17512	1/2 thk x 18 in x 4 ft
HD17513	1/2 thk x 18 in x 5 ft
HD17514	1/2 thk x 18 in x 10 ft

PART NO.	DESCRIPTION
HD17521	1/2 thk x 24 in x 5 ft
HD17523	1/2 thk x 24 in x 10 ft
HD17532	1/2 thk x 3 ft x 4 ft
HD17535	1/2 thk x 3 ft x 25 ft
HD17545	1/2 thk x 4 ft x 25 ft



Premium Exhaust Wrap

Premium grade exhaust wrap stops radiant heat than any other fiberglass wrap available. The premium grade exhaust heat wrap features a tighter weave than typical heavy duty industry standard exhaust wraps, thus retaining more heat, fraying less, and offering a longer lifespan. This exhaust lagging heat wrap can withstand a real world rating 1350F continuous and 2000F intermittent. Thermal insulation wrap for heavy duty applications maintains hotter exhaust gases, which can improve your DPF's performance. In addition, increased exhaust gas temperature decreases the gas density, and that allows the exhaust gas to exit the system faster! This increases exhaust scavenging, pulling intake and exhaust gases through the system faster, helping to lower intake temperatures: that equals more horsepower. Fuel line wrap also reduces radiant heat damage and can lower under hood temperatures by as much as 60%. Lower overall under hood temperatures can further reduce your intake temperatures which can increase performance and fuel economy. Premium exhaust wrap can be fastened with Thermal-Tie™, hose clamps, or wire.



Premium exhaust wrap meets ASTM E84 for incombustible materials. It also meets USCG 164.009 specification for incombustible materials.

FEATURES

- Remains soft, flexible and strong, even at 1350° F
- Higher operating temps than comparable fiberglass wraps
- Excellent abrasion-resistance
- Tighter weave than other wraps

PART NO.	DESCRIPTION
HD30012	1 in x 50 ft
HD30022	2 in x 50 ft
HD30023	2 in x 100 ft
HD30043	4 in x 100 ft
HD30063	6 in x 100 ft

HP Felt Shield™

Our HP Felt Shield is the perfect high temperature insulation solution for heating issues caused by a diesel particulate trap retro fit, general exhaust heat, genset, turbo wrap, or any repower restoration. The special high temperature insulation materials used in this fabric make it amazingly efficient at displacing thermal energy, even in a 1/8-inch thickness. The black side of this felt may be used directly on the exhaust system for direct insulation. The versatility of this product also allows it to be used as a heat shield thermal barrier by lining the engine compartment or under side of vehicle and facing the aluminum side towards the exhaust system to stop the radiant heat. When used as a heat shield barrier, attach mechanically with rivets or screws, large washers are also recommended. Designed to take temperatures of 1800-degrees Fahrenheit.



HP Felt shield meets ASTM E84 for incombustible materials. It also meets USCG 164.009 specification for incombustible materials.

FEATURES

- Reflective radiant continuous temperature 1100°F aluminum side
- Continuous direct contact temperature, 1800°F, HP felt side
- May be used as direct insulation on exhaust system
- Or face foil side towards heat source to act as a radiant heat shield barrier

PART NO.	DESCRIPTION
HD80101	1/8 in thk x 24 in x 53 in
HD80102	1/8 in thk x 53 in x 60 in
HD80111	1/4 in thk x 24 in x 53 in
HD80112	1/4 in thk x 53 in x 60 in

Black Exhaust Wrap



Our black exhaust wrap is designed to be wrapped around your heavy duty exhaust system. This heat wrap exhaust maintains hotter exhaust gases, decreases the density, and that allows the exhaust gas to exit the system faster! Increased exhaust scavenging is produced and helps to lower intake temperatures: that equals more horsepower. This exhaust lagging wrap also reduces radiant heat damage and can lower under hood temperatures and engine room temperatures by as much as 50 percent. This exhaust wrap features a new proprietary black coating, it holds its color longer than similar graphite coated wraps. It can withstand 1200 degrees Fahrenheit continuous and 2000 degrees Fahrenheit intermittent. The Heatshield Products black industrial wrap can be secured with a Thermal-Tie™, hose clamp, wire, or any mechanical fastener. This exhaust wrap is used on marine, heavy duty, industrial and on road equipment and engines.



Black exhaust wrap is noncombustible and it is also water and fungus resistant. Black exhaust wrap meets ASTM E84 for incombustible materials. It also meets USCG 164.009 specification for incombustible materials.

FEATURES

- Lowers underhood temps up to 50%
- Deep black coating stays black
- Increases exhaust scavenging

PART NO.	DESCRIPTION
HD32012	1 in x 50 ft
HD32022	2 in x 50 ft
HD32023	2 in x 100 ft

PART NO.	DESCRIPTION
HD32033	3 in x 100 ft
HD32043	4 in x 100 ft
HD32063	6 in x 100 ft

Inferno Wrap™



Unlike fiberglass and basalt (volcanic) exhaust wraps (which should be advertised at a 1200 degrees Fahrenheit operating temperature); our Inferno Wrap is made from silica yarn making this header wrap soft, strong, and flexible while operating at its designed operating temperature of 2000 degrees Fahrenheit continuous. It will sustain the extreme temperatures that your glowing pipes from the turbo, down pipe, manifold, or DPF applications require. Simply put there is not an insulating wrap on the market that will take higher temperatures and last longer. In fact this header wrap can withstand intermittent temperatures of 3000 degrees Fahrenheit, making it the best wrap to be used on your tier 4 diesel application. You can actually wrap the exhaust with Inferno Wrap, run it, heat it up, and then unwrap Inferno Wrap when needed. Wrap or "coil" Inferno Wrap around your exhaust pipe, using overlap to hold itself in place (like a hockey stick or tennis racket grip) use the Heatshield Products Thermal-Tie™, hose clamps, or wire to secure ends in place.

The Heatshield Products Inferno Wrap is well suited for marine, heavy duty, industrial, and tier 4 emission applications.

Heatshield Products Inferno Wrap is asbestos free and is made from a base high quality silica yarn. This thermal exhaust wrap is noncombustible, it is also water and fungus resistant. Inferno exhaust wrap meets ASTM E84 for incombustible materials. It also meets USCG 164.009 specification for incombustible materials.



FEATURES

- Remains flexible even at 2000° F
- Reduces underhood and engine room temps up to 50%
- Great turbo-manifold wrap

PART NO.	DESCRIPTION
HD32512	1 in x 50 ft
HD32522	2 in x 50 ft
HD32523	2 in x 100 ft

OEM Replacement Jackets



We have engineered our replacement exhaust heat shield jackets to meet or exceed OEM specifications. In many cases our jackets will outperform an OEM because we are not restricted by an accounting department that oversees an engineering and production department. We have applications for Caterpillar, Cummins, John Deere and more. We use bio-safe products so there will not be any long term health concerns like there are with imported products.



If we do not have it, YES we can make, provided you have the time. Simply use the contact form on our website. It will require you to send in a new or old jacket for us to replicate. Lead time is usually 4 weeks, and yes we will quote you before we make it.

FEATURES

- Exceeds OEM quality and temperature
- Made with SAFE bio-friendly textiles
- If we don't have it we CAN make it - lead time 3-4 weeks

PART NO.	DESCRIPTION
HP-C-205-6345B	Cat equivalent 205-6345
HP-C-205-6346B	Cat equivalent 205-6346
HP-C-213-6865B	Cat equivalent 213-6865
HP-C-213-6866B	Cat equivalent 213-6866
HP-C-233-7920B	Cat equivalent 233-7920
HP-C-239-1464B	Cat equivalent 239-1464
HP-C-338-2267B	Cat equivalent 338-2267
HP-C-338-2268B	Cat equivalent 338-2268
HP-C-213-6866B	Cat equivalent 213-6866

Lava Turbo Shield™



Our Heavy duty Lava Turbo Shield™ is born from our #RaceTested automotive shield. In addition to taking the extreme heat from the most demanding application, our heavy duty turbo shield has some stainless steel mesh so it can handle the extra vibration that your heavy duty rig requires.

The HD Lava Turbo Heat Shield™ is a custom fit and uses extreme-temperature materials to keep heat in the hot side of the turbo where it belongs. The main advantage of the HD Lava Turbo Shield vs. the all metal stainless steel shields is greater underhood temperature reduction. You do not get the hot side to cold side heat transfer between the inner and outer metal layers.

This heavy duty turbo wrap has a rugged outer layer of our Lava Shield™ material that is 25 percent stronger than comparable fiberglass shields, giving a longer life span. The combination of stainless steel mesh and silica contact layer makes Lava Turbo Heat Shield™ capable of withstanding 1800 degrees F continuous. We use a ½-inch-thick BioCool thermal-barrier inner pad sandwiched between the Lava Shield and silica mat.

The precision-fit design of this heavy duty heat shield turbo wrap means you do not have to trim or fit the heatshield blanket to your turbo housing, making installation a snap.



FEATURES

- Capable of reducing up to 60% of turbo-generated underhood heat
- Reduces turbo lag and chatter while increasing boost
- Does not conduct heat to "cold side" like metal turbo shields
- Precision fit; installs in minutes without trimming or cutting
- Custom shields available; will require housing to make prototype

PART NO.	DESCRIPTION
HD3T201	3406B Cat
HD3T601	X15 & ISX Cummins
HD3T605	Cummins QSM11 & M11

HP Sticky Shield™

Sticky Shield™ is the definition of a heavy duty heat shield. The rugged 0.003 in thick aluminum layer is mated to our exclusive Kool Core™ technology. This gives the Sticky Shield the capacity to shield away up to 90 percent of radiant heat away from vital components. Sticky Shield may be cleaned after installation and can even survive power washing. This heavy duty stick on shield is well suited for shield radiant DPF and exhaust heat from cabs, shielding air boxes to help lower IAT's, and engine room walls. The heavy duty peel and stick adhesive will bond to almost any clean surface (not recommended for unfinished fiberglass or carbon). It looks similar to many OEM materials, but there isn't a bean counter here lower costs – this is an OEM heat shield on steroids. Because it is so rugged and effective it is well suited for heavy duty, marine, and industrial applications.

HP Sticky Shield is asbestos free and made from corrosion resistant aluminum. This product is designed to be used UNDER the cab on the floor pan, firewall, transmission tunnel, or inside the walls of an engine room.

Please note: This product ships folded or rolled to keep shipping costs down. You may see bends in it upon arrival, but the bends will become minimally visible after installation.

FEATURES

- Reflects up to 90% of radiant
- May be cleaned after installation
- Flexible; bends and conforms to almost any shape
- Adhesive backing sticks to almost any clean surface
- 0.003-inch-thick armor layer



1100°F
CONTINUOUS



2000°F
INTERMITTENT



PART NO.	DESCRIPTION
HD18022	0.125 thk x 23 in x 24 in
HD18034	0.125 thk x 36 in x 47 in
HD18044	0.125 thk x 46 in x 47 in

Lava Shield™

Made from crushed volcanic rock, Heatshield Products Lava Shield™ has heatshielding capabilities with a carbon-fiber look. The basalt fiber is water, chemical, acid, and UV resistant. Lava Shield™ can excel as a heat shield barrier in outdoor and harsh environments. It can be used under a cab, on a vessel or off-shore platform. The high grip adhesive is design to be applied to a "cold side surface", shielding radiant heat away from components. It can be used with less than 1 inch of airspace, but 1/2 inch minimum is recommended. It is also better to use Lava Shield™ on applications where there is little airflow, making it a superior insulator to aluminum and gold barrier fabrics in these conditions. Lava Shield™ withstands 1200 degrees F direct continuous temperatures and 2000 degrees F intermittent.



1200°F
CONTINUOUS



2000°F
INTERMITTENT



FEATURES

- Capable of reducing up to 80% of radiant heat
- Adhesive backing sticks to almost any clean surface
- Helps shield cabs, engine room walls, and outdoor equipment
- Bulk rolls available

PART NO.	DESCRIPTION
HD78105	0.025 thk x 48 in x 5 ft
HD78135	0.025 thk x 48 in x 30 ft

Inferno Shield™



1800°F
CONTINUOUS



2200°F
INTERMITTENT

More than just another heatshield, the Inferno Shield™ can be custom configured to handle whatever your thermal requirements are. It can be bent, folded and twisted to form a near-infinite number of custom shapes. Our Inferno Shield™ heatshields are made from 321 stainless steel. Each of these alloy heatshields uses our ceramic free InferoCore™ pad capable of 2000 degrees Fahrenheit continuous. The InferoCore™ insulation may be trimmed if needed, then the outer stainless layer can be folded over for a custom size or fit. Larger and custom heatshields are available with volume purchase. These heatshields may be fastened with Thermal-Tie™, safety wire, screws or rivets.



FEATURES

- Capable of reflecting over 90% of radiant heat
- Flexible; bends and will hold its shape
- Simple installation in minutes
- Perfect radiant heatshield for mufflers, catalytic converters, DPF and more

PART NO.	DESCRIPTION
HD12606	0.25 in thk x 6 in x 14 in
HD12608	0.25 in thk x 14 in x 20 in
HD12610	0.25 in thk x 24 in x 35 in

Thermaflect Shield™



1200°F
CONTINUOUS



2000°F
INTERMITTENT

This universal flexible heatshield deflects heat away and is rugged enough to be used for almost any radiant heat application. If used with a 1-inch air gap between the heat source and Thermaflect Shield™ and with good airflow, this heatshield can reflect over 90 percent of radiant heat. We use a 1/4-inch-thick BioCool thermal-barrier inner pad sandwiched between heavy-duty foil, bound and sewn together with a stainless steel mesh at the edges. BioCool is a non-caustic, non-flammable thermal barrier. It does not cause itching and won't smoke or smell the first time it is heat-cycled. By binding the edges with this mesh, we created greater flexibility and a more rugged product. This heatshield withstands 1100 degrees F continuous radiant heat, and 500 degrees F direct when in direct contact. Thermaflect Shield™ is intended for wrapping around airboxes, electrical boxes and air conditioning components or is used to shield radiant heat from catalytic converters, mufflers and DPF, and on the bottom of the floorpan. Thermaflect Shield™ may be fastened with Thermal-Tie™, safety wire, screws or rivets.



FEATURES

- Capable of reflecting over 90% of radiant heat
- Flexible; bends and conforms to almost any shape
- Simple installation in minutes
- Used for mufflers, catalytic converters, DPF, oven doors, and more
- Custom shields available

PART NO.	DESCRIPTION
HD10606	0.25 thk x 6 in x 14 in
HD10608	0.25 thk 14 in x 20 in

Cobra Shield™



Cobra Shield™ heatshield is a high-tech radiant heat barrier. It features a proprietary manufacturing process and chemical-resistant coating: aluminum particles are bonded on a molecular level, as opposed to a laminate like with most aluminized heat barriers. This makes Cobra Shield™ stronger and abrasion-resistant, and it won't delaminate when subjected to excessive moisture. In addition to the strong aluminized bond, a special coating makes Cobra Shield™ easy to clean and chemical- and corrosion-resistant. Cobra Shield™ is the ultimate heatshield for your transmission tunnel, hood, firewall, floorpan and so on. Cobra Shield™ withstands 1,100 degrees F continuous and 2,000 degrees F intermittent.

FEATURES

- Revolutionary aluminized coating; won't delaminate like foil cloths
- Chemical- and weather-resistant coating
- More rugged and abrasion-resistant than laminated cloths
- Reflects radiant heat away
- Helps shield firewalls, hoods, body panels and floorboards

PART NO.	DESCRIPTION
HD75001	0.014 thk x 36 in x 56 in
HD75010	0.014 thk x 56 in x 10 ft
HD75012	0.014 thk x 56 in x 20 ft

HP Heatshield Mat™



Keep your cool with our Heatshield Products Heatshield Mat. When used in applications with 1 inch of airspace and good airflow, this heatshield cloth is capable of reflecting 90 percent of radiant heat. Face the aluminized side toward the source of radiant heat to shield heat away. This product withstands 1,100 degrees F of radiant heat (requires minimum of 1 inch of airspace) and up to 450 degrees F of direct heat, perfect for using underneath your floorpan to shield heat from your DPF, muffler, catalytic converter and exhaust system, or it can be used on the firewall to shield engine heat. It can also be used as a cold-air intake heatshield. Put it on your metal or plastic airbox to stop heat from raising air-intake temperatures. The Heatshield Mat is available with a high-temperature peel-and-stick adhesive. The self-adhesive version is not recommended for rough, unfinished fiberglass or carbon fiber. Bulk heatshield cloth rolls are available.

FEATURES

- Capable of reducing up to 90% of radiant heat
- Adhesive backing sticks to almost any clean surface, not recommended for rough/unfinished fiberglass
- Helps shield firewalls, hoods, body panels and floorboards
- All rolls 0.030 inch thick
- Bulk rolls and custom widths available; minimums apply

PART NO.	DESCRIPTION
HD72115	0.030 in thk x 12 in x 50 ft w/adh
HD72124	0.030 in thk x 24 in x 48 in w/adh
HD72151	0.030 in thk x 58 in x 5 ft w/adh
HD72152	0.030 in thk x 58 in x 50 ft w/adh

Thermafect Sleeve™



1100°F
CONTINUOUS



2000°F
INTERMITTENT

Thermafect Sleeve™ is the ultimate radiant heat barrier sleeve. When placed 1 inch plus away from the heat source and with good air flow, Thermafect Sleeve™ can shield up to 90 percent of radiant heat. This heat shield sleeve is lightweight and is great for wiring, fuel lines, tubes, and pipes that needed to be shielded from engine or industrial factory heat. Thermafect Sleeve™ is a great way to improve fuel efficiency too. When used on intercooler pipes it reduces the air intake temperatures in an engine room or underhood applications. The cooler air intake charge yields a more efficient and effective combustion cycle. Thermafect Sleeve™ withstands radiant heat of 1100 degrees Fahrenheit continuous and 500 degrees Fahrenheit direct. Please note, when used with less than 1 inch of clearance the reflectivity is greatly reduced.

Thermafect Sleeve™ is an extremely versatile heat sleeve that works for heavy duty, marine, industrial, and long haul applications. Like any heat shield sleeve it is important to make sure the ends of the sleeve are secured or sealed onto the pipe, hose, or harness it is covering. Thermafect Sleeve™ is available in a sewn solid seam and hook and loop open seam.



HEATSHIELD SLEEVES

FEATURES

- Capable of reducing up to 90% of radiant heat
- Helps to prevent vapor lock, reduces air-intake temperatures, protects wires from melting
- Available in a hook-and-loop seam

PART NO.	DESCRIPTION
HD27011	1/2 in x 10 ft, sewn
HD27012	1/2 in x 25 ft roll, sewn outseam
HD27021	3/4 in x 10 ft, sewn
HD27022	3/4 in x 25 ft roll sewn
HD27101	1 in x 10 ft sewn
HD27102	1 in x 25 ft inseam
HD27151	1-1/2 in x 10 ft sewn
HD27152	1-1/2 in x 25 ft inseam
HD27201	2 in x 10'; sewn seam
HD27202	2 in x 25 ft inseam
HD27251	2-1/2 in x 10 ft sewn seam
HD27252	2-1/2 in x 25 ft inseam
HD27301	3 in x 10 ft sewn
HD27302	3 in x 25 ft sewn
HD27351	3-1/2 in x 10 ft sewn seam
HD27352	3-1/2 in x 25 ft inseam
HD27401	4 in x 10 ft sewn seam
HD27402	4 in x 25 ft inseam
HD27451	4-1/2 in x 10 ft sewn seam
HD27452	4-1/2 in x 25 ft inseam
HD27501	5 in x 10 ft sewn seam
HD27504	5 in x 25 ft inseam

PART NO.	DESCRIPTION
HD28011	1/2 in x 10 ft hook & loop
HD28012	1/2 in x 25 ft hook & loop
HD28021	3/4 in x 10 ft hook & loop
HD28022	3/4 in x 25 ft hook & loop
HD28101	1 in x 10 ft hook & loop
HD28102	1 in x 25 ft hook & loop
HD28151	1-1/2 in x 10 ft hook & loop
HD28152	1-1/2 in x 25 ft hook & loop
HD28201	2 in x 10 ft hook & loop
HD28202	2 in x 25 ft hook & loop
HD28251	2-1/2 in x 10 ft hook & loop
HD28252	2-1/2 in x 25 ft hook & loop
HD28301	3 in x 10 ft hook & loop
HD28302	3 in x 25 ft hook & loop
HD28351	3-1/2 in x 10 ft hook & loop
HD28352	3-1/2 in x 25 ft hook & loop
HD28401	4 in x 10 ft hook & loop
HD28402	4 in x 25 ft hook & loop
HD28451	4-1/2 in x 10 ft hook & loop
HD28452	4-1/2 in x 25 ft hook & loop
HD28501	5 in x 10 ft hook & loop
HD28504	5 in x 25 ft hook & loop

Fire Shield Sleeve™



Fire Shield Sleeve™ is a fiberglass silicone heat shield sleeve providing rugged thermal protection for your hydraulic lines, fuel lines, wiring, and chemical sensitive tubes. Heatshield Products Fire Shield Sleeve is designed to reduce and dissipate heat and works great for areas where harsh environments exist that require heat shield insulation. Fire Shield Sleeve™ can be used to shield radiant heat and also retain heat inside pipes and tubes. HP Fire Shield Sleaving™ withstands 450 degrees Fahrenheit continuous and 900 degrees Fahrenheit for less than 30 seconds.

Fire Shield Sleeve is well suited for harsh application environments like refineries, heavy duty equipment, marine applications, industrial manufacturing, breweries, as well as on road applications.

Fire Shield Sleeve™ meet ASTM E84 for incombustible materials. They also meet USCG 164.009 specification for incombustible materials.

FEATURES

- Silicone layer can be cleaned and protects against abrasion
- Helps to prevent fuel-system vapor lock
- Protects wires from melting
- Reduces and dissipates heat



PART NO.	DESCRIPTION
HD21022	Red 3/8 in x 10 ft roll
HD21025	Red 3/8 in x 100 ft roll
HD21032	Red 1/2 in x 10 ft roll
HD21035	Red 1/2 in x 100 ft roll
HD21042	Red 3/4 in x 10 ft roll
HD21045	Red 3/4 in x 50 ft roll
HD21102	Red 1 in x 10 ft roll
HD21105	Red 1 in x 50 ft roll
HD21152	Red 1-1/2 in x 50 ft roll
HD21155	Red 1-1/2 in x 50 ft roll
HD21202	Red 2 in x 10 ft roll
HD21205	Red 2 in x 50 ft roll
HD21552	Red 2-1/2 in x 10 ft roll
HD21255	Red 2-1/2 in x 50 ft roll

PART NO.	DESCRIPTION
HD21302	Red 3 in x 10 ft roll
HD21305	Red 3 in x 50 ft roll
HD21352	Red 3-1/2 in x 10 ft roll
HD21355	Red 3-1/2 in x 50 ft roll
HD21402	Red 4 in x 10 ft roll
HD21405	Red 4 in x 50 ft roll
HD22022	Black 3/8 in x 10 ft roll
HD22025	Black 3/8 in x 100 ft roll
HD22032	Black 1/2 in x 10 ft roll
HD22035	Black 1/2 in x 100 ft roll
HD22042	Black 3/4 in x 10 ft roll
HD22045	Black 3/4 in x 50 ft roll
HD22102	Black 1 in x 10 ft roll
HD22105	Black 1 in x 50 ft roll

PART NO.	DESCRIPTION
HD22152	Black 1-1/2 in x 10 ft roll
HD22155	Black 1-1/2 in x 50 ft roll
HD22202	Black 2 in x 10 ft roll
HD22205	Black 2 in x 50 ft roll
HD22502	Black 2-1/2 in x 10 ft roll
HD22255	Black 2-1/2 in x 50 ft roll
HD22302	Black 3 in x 10 ft roll
HD22305	Black 3 in x 50 ft roll
HD22352	Black 3-1/2 in x 10 ft roll
HD22355	Black 3-1/2 in x 50 ft roll
HD22402	Black 4 in x 10 ft roll
HD22405	Black 4 in x 50 ft roll

Thermal-Tie™



1800°F
CONTINUOUS



2200°F
INTERMITTENT

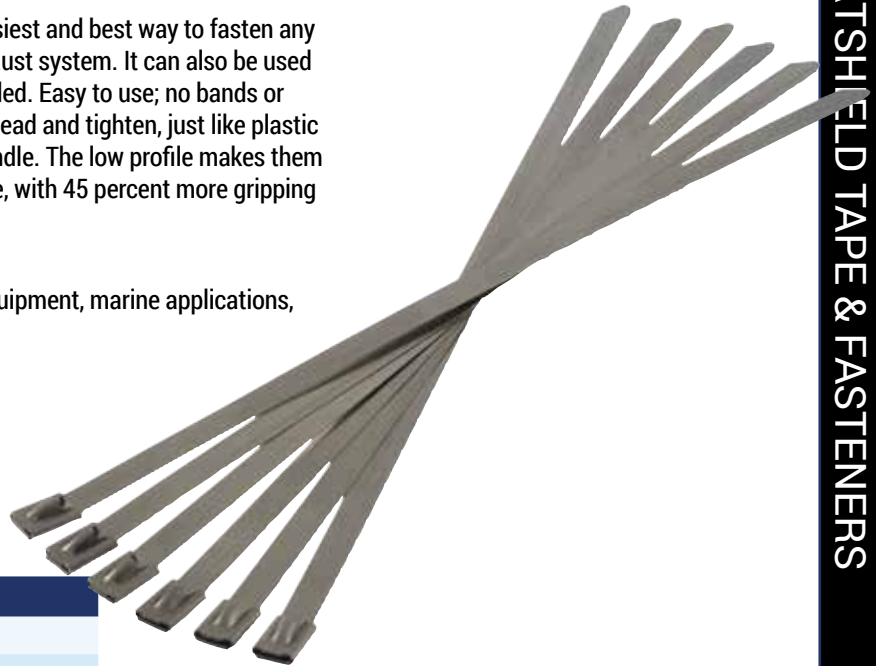
Thermal-Tie™ is a stainless steel locking tie are the easiest and best way to fasten any type of high temperature insulation lagging on an exhaust system. It can also be used in any application where high strength fastener is needed. Easy to use; no bands or buckles required! Simply pull the tail end through the head and tighten, just like plastic wire ties. There are no sharp edges and are easy to handle. The low profile makes them ideal for any tight fit application. 304 stainless steel tie, with 45 percent more gripping power than most ties available on the market.

Our Thermal-Ties™ are suited for use on heavy duty equipment, marine applications, industrial engines and on road long haul applications.

FEATURES

- No buckles or bands required
- 304 stainless steel locking ties
- Installs with needle-nose and diagonal pliers
- 0.010 inch thick

PART NO.	DESCRIPTION
HD35114	5/16 in x 10 in, 25 pack
HD35115	5/16 in x 10 in bag of 50
HD35118	5/16 in x 20 in 25 pack
HD35119	5/16 in x 20 in bag of 50
HD35120	5/16 in x 33 in 25 pack
HD35121	5/16 in x 33 in bag of 50
HD35122	5/16 in x 47 in 25 pack
HD35123	5/16 in x 47 in bag of 50



Thermaflect Tape™



1100°F
CONTINUOUS



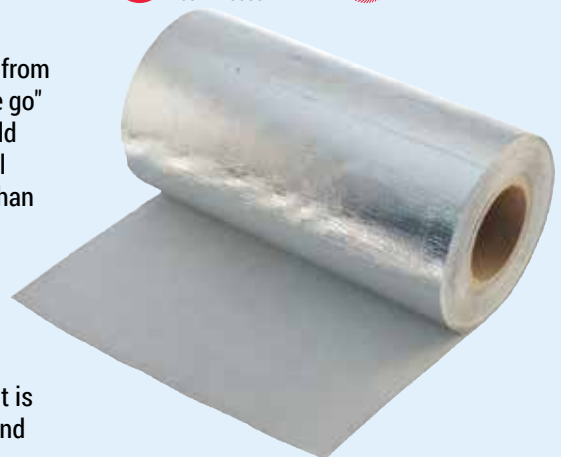
2000°F
INTERMITTENT

Thermaflect Tape™ shields and reflects up to 90 percent of radiant heat away from your heavy duty application. Thermaflect Tape™ is excellent as a quick "on the go" solution to heat problems, as it can shield without disassembly. Our heat shield tape is a must have for your tool box when conducting on equipment or vessel repairs. Durable cloth construction makes it longer lasting and more rugged than similar foil only products. This industrial heat shield tape withstands 1100 degrees Fahrenheit continuous radiant heat (requires minimum of 1 inch of airspace) and 500 degrees Fahrenheit of direct contact. The reflective heat shield tape cuts easily and installation is simple with our high temperature self-adhesive backing that sticks to any CLEAN surface.

Thermaflect Tape™ can be used for intercooler pipes, wires, hoses, and lines. It is well suited for marine, heavy duty, and industrial use because of its long life and heavy duty construction.

FEATURES

- Capable of reducing up to 90% of radiant heat
- Withstands 1,100 °F continuous radiant heat (requires minimum of 1 inch of airspace) and 500 °F direct contact
- Adhesive backing sticks to almost any clean surface
- Helps shield fuel lines, brake lines, wire looms and more from radiant heat



PART NO.	DESCRIPTION
HD34105	1 in x 50 ft
HD34152	1-1/2 in x 20 ft
HD34123	2 in x 50 ft
HD34141	4 in x 10 ft

HP Welding Pillow™



500°F
CONTINUOUS



SLAG
INTERMITTENT

The HP Welding Pillow™ prevents fatigue while performing extensive welding. Featuring an outer layer of our HP Weld Mat™ or RugGold Mat™, these pillows are abrasion-resistant and resistant to liquid, equaling a long life. The Welding Pillow™ also provides protection against metal splashes, flames, sparks and ultraviolet radiation, while the inner non-flammable fiberglass insulation provides comfort. For welding and manufacturing, you can improve worker efficiency by reducing fatigue; the pillow helps steady the hand because of the increased comfort and reduction in strain. Available in both the gray HP Weld Mat™ and our exclusive RugGold™ Mat both can be cleaned with a diluted bio-degradable de-greaser.

FEATURES

- Less fatigue means better welds
- Great for under-vehicle repairs

PART NO.	DESCRIPTION
932001	10-in x 10-in x 3-in Gray
932002	12-in x 18-in x 3-in Gray
932004	24-in x 36-in x 3-in Gray
932011	6-in x 4.5-in x 3-in Gold Wrist Pillow
932012	10-in x 8-in x 3-in Gold
932013	12-in x 12-in x 3-in Gold



Glove Armor™



1800°F
CONTINUOUS



2200°F
INTERMITTENT

Heatshield Glove Armor™ gives your hands extra protection during high-temp TIG welding jobs. The Glove Armor™ TIG finger shield fits over most standard welding gloves, providing extra protection for the outside of your hands, pinkie and wrist letting you weld longer with more comfort and control. This allows you to stay in the "dime zone" longer for better welds and more efficient welding work.

Glove Armor™ slides over your glove and secures around your wrist with a sturdy strap. This TIG finger heat shield is designed to withstand extreme heat (constant 1800F, intermittent 2200F) without melting onto the surface. The HP Felt is extremely efficient at displacing thermal energy. The "Gold Finger" version has an inner liner of our exclusive RugGold™ shield, this gives it a little more grip to your glove and another layer of protection. Glove Armor™ also allows you to brace your hand on parts that are hot enough to cause burning to your skin even through the typical welding glove.

FEATURES

- Protects pinkies and sides of hand
- Fits over most welding gloves
- Less fatigue means better welds



PART NO.	DESCRIPTION
932021	Black
932022	Black & Gold

HP Torch Blanket™



1800°F
CONTINUOUS



2200°F
INTERMITTENT

HP Torch Blanket™ makes it convenient to perform repair welds on industrial equipment and vehicles without disassembly. This can reduce production downtime by not having to turn off equipment, or return vehicles to the shop, saving time during race preparation. The blanket can even be used as a blaze barrier for welding pipes or tubes together. HP Torch Blanket™ is made of our HP Felt™, making it more durable and longer lasting than traditional welding blankets (up to 10 times more compared to leather blankets). Some blankets include brass grommets or magnets at the corners to make it handy to mount anywhere a quick repair is needed. The keyhole model of the HP Torch Blanket™ can be used as a blaze barrier when sweating or welding pipes around the house or on the construction site. The HP Torch Blanket™ is black with a dark gray binder, and is capable of withstanding 1,800 degrees F continuous heat. Custom sizes are available.



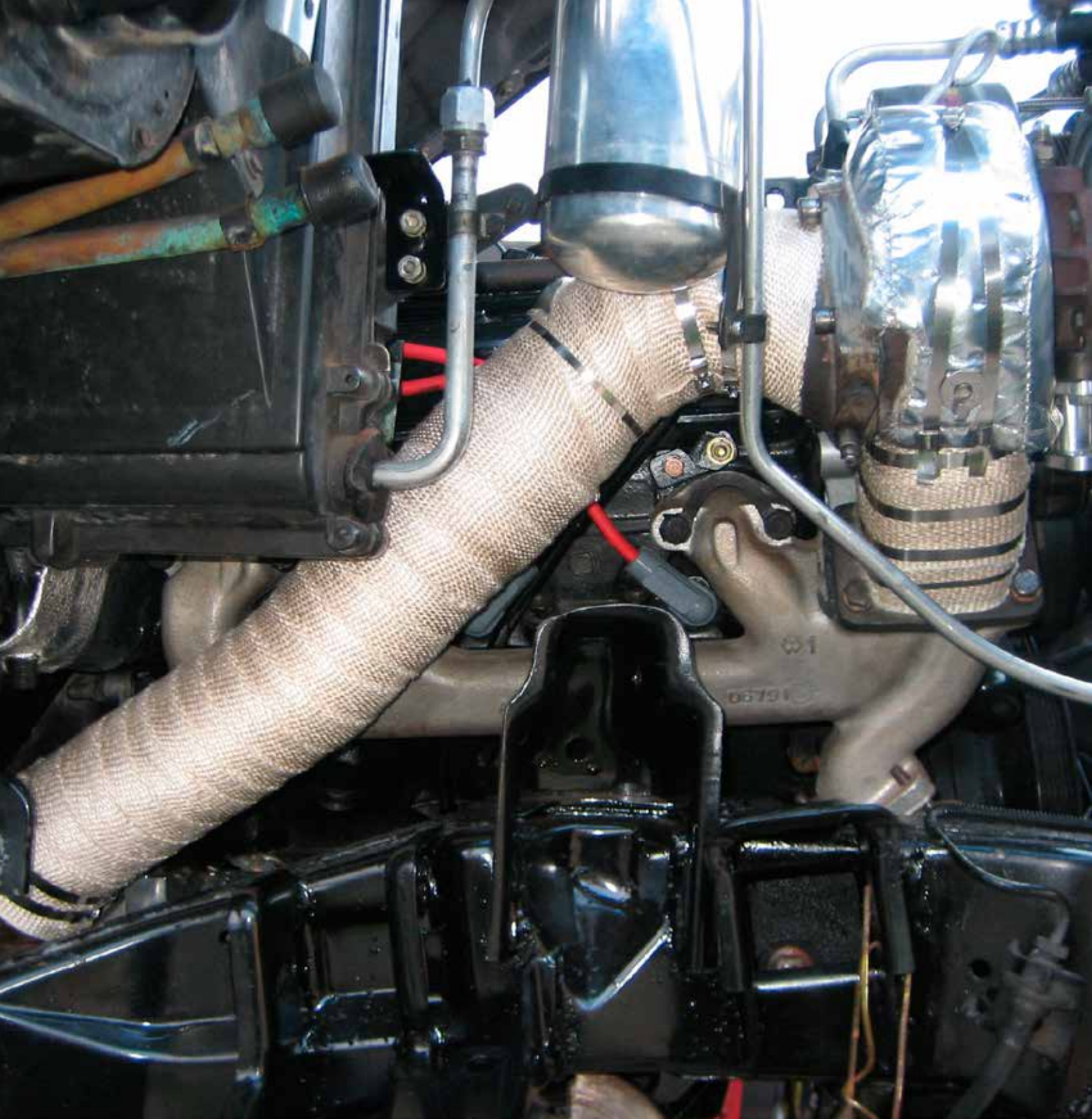
FEATURES

- Protects components while repairs are made
- The torch can touch the Torch Blanket™
- Makes it convenient to make repair welds on industrial equipment and vehicles without disassembly

PART NO.	DESCRIPTION
931018	18 in x 18 in w/ grommets
931019	18 in x 18 in
931020	18 in x 18 in w/ center key hole

PART NO.	DESCRIPTION
931022	18 in x 18 in w/ magnets
931025	26 in x 36 in
931053	53 in x 72 in





Made in the USA
Established in 1985

Heatshield Products, Inc.

www.heatshieldproducts.com | info@heatshieldproducts.com | (760) 751-0441

Facebook: @HeatshieldProducts | Twitter: @HeatshieldProds

Instagram: @HeatshieldProducts | Google+: +HeatshieldProducts

© Heatshield Products, Inc.