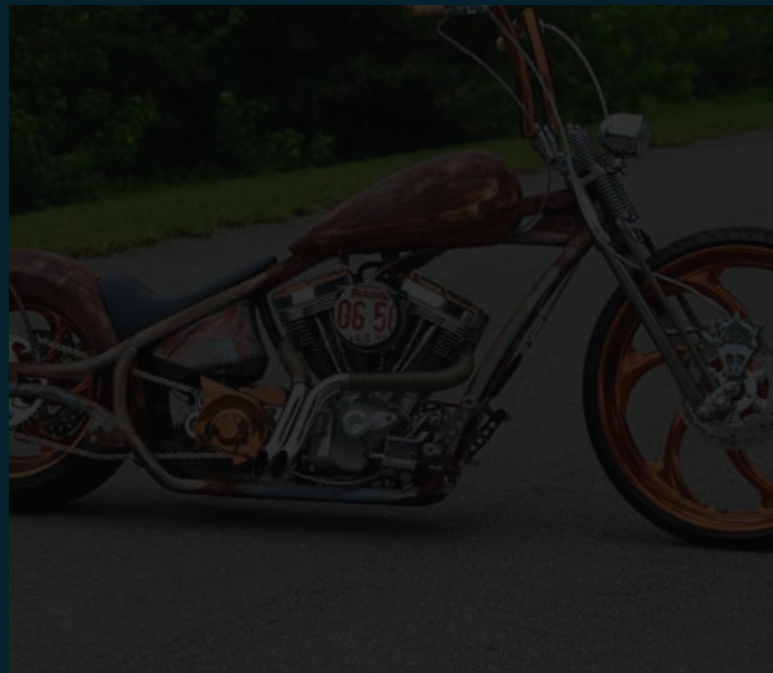
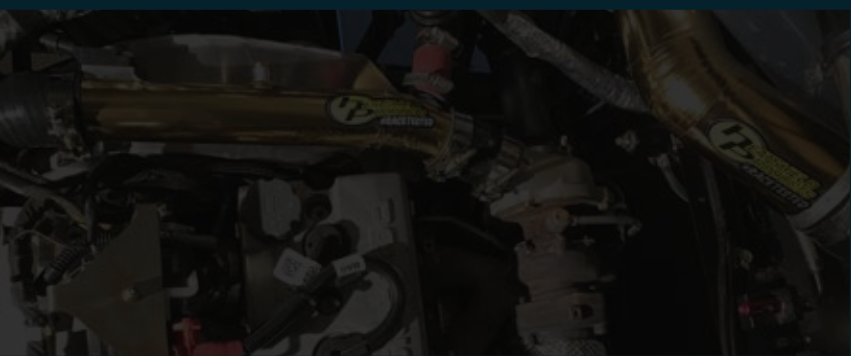
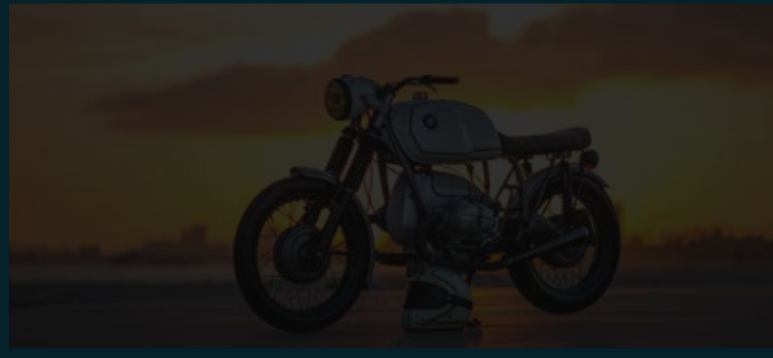


HEATSHIELD PRODUCTS **#RACETESTED**



MISSION

"To deliver American-made high performance insulation to solve hot problems."

STORY

Heatshield Products, Inc. has been serving the performance and racing industry since 1985, developing the highest quality heat insulation and thermal-barrier products at competitive prices. Our cutting-edge products include thermal protection for a variety of industries: automotive, motorcycle, marine, Department of Defense, industrial manufacturing, industrial welding and many more. And we're proud of our great customer service.

FACTS

Heatshield Products doesn't employ marketing tricks or nonsense to sell products. We offer the correct operational temperature range of our thermal-barrier products, and we let you know each product's limitations. When shopping our extensive line of heat-resistant products, we make it easy for you to know the temperatures each one is capable of withstanding, without complicated and confusing technical jargon.

CAPABILITIES

What we do goes beyond engineering and manufacturing world-class thermal- and sound-barrier products. We offer consulting services for product design and improving the energy efficiency of the manufacturing process. Heatshield Products has extensive experience in solving thermal-barrier and protection problems for a variety of situations and environments. Heatshield Products also offers custom manufacturing and private label. We currently provide such programs to several OEM and aftermarket manufacturers.

CONTENTS

Product Application Guides	4
Mid Under Body	4
Rear Under Body	5
Late-Model Underhood	6
Classic Underhood	7
Turbo Applications	8
Interior	9

Exhaust Insulation	10-13
Moto Heatshield Armor™	10
Cobra Skin™ Wrap	11
Inferno Header Wrap™	11
Lava Exhaust Wrap™	12
Black Exhaust Wrap	13
Moto Exhaust Wrap	13

HeatShield Barriers	14
Moto Sticky Shield™	14
Moto Stage Shield™	14
Lava Shield™	15
Motoflect Cloth™	16
HP Heatshield Mat	16

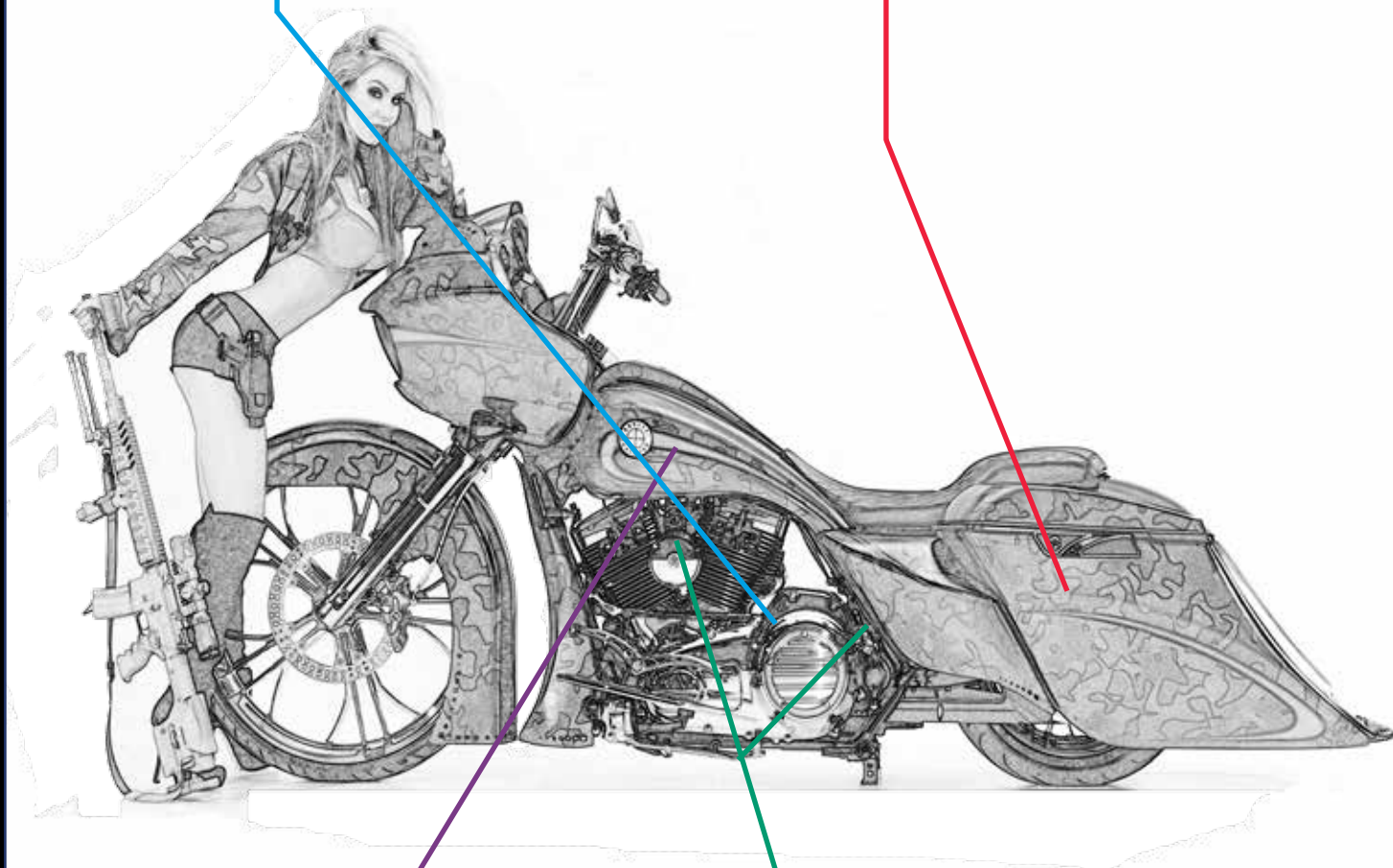
Turbo Heatshields	17
Moto Turbo Shield™	17

Heatshield Sleeveings	18
HP Builder's Kit™	18

Heatshield Tape & Fasteners	19
Moto Pipe Wrap Tie™	19
Motoflect Tape™	20
Moto Foil Tape™	20

Component-Specific Heat Shields	21
Lava Oil Filter Shield™	21
Cool Can Shields™	22

Heatshield Welding Products	23
HP Welding Pillow™	24
Glove Armor™	24
HP Torch Blanket™	25

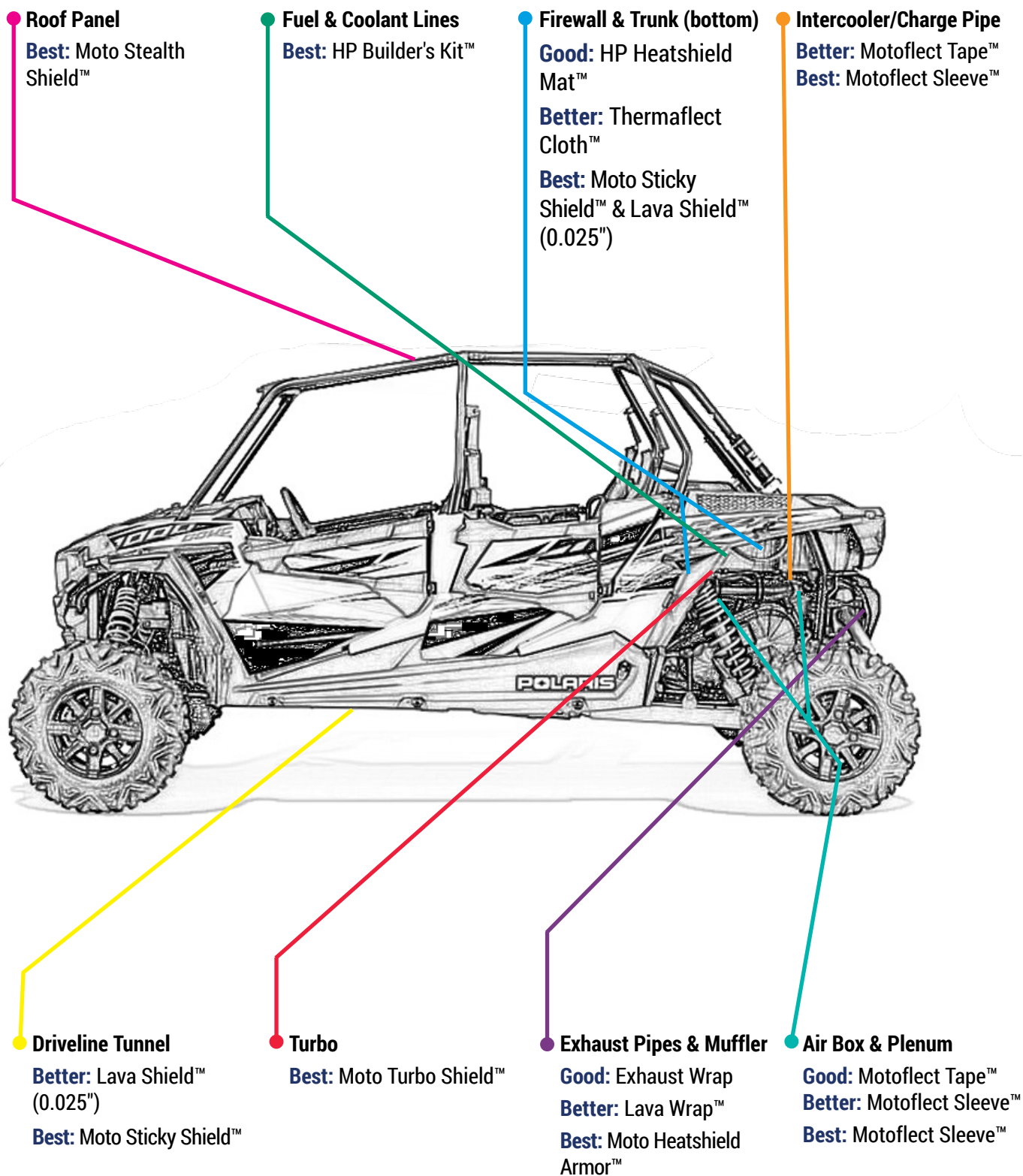


● **Exhaust Pipes & Muffler**
Good: Exhaust Wrap
Better: Black Exhaust Wrap
Best: Lava Wrap™ or Cobra Wrap™

● **Bags**
Good: HP Heatshield Mat™
Better: Motoflect Cloth™
Best: Moto Lava Shield™ (0.025")

● **Fuel Tank (Bottom)**
Good: HP Heatshield Mat™
Better: Motoflect Cloth™
Best: Lava Shield™

● **Fuel, Brake, & Oil Lines**
Best: HP Builder's Kit™



● **Seat Pan**

Good: HP Heatshield Mat™

Better: Moto Lava Shield™
(0.025")

Best: Moto Sticky Shield™

● **Air Box & Plenum**

Good: Motoflect Tape™

Better: Motoflect Sleeve™

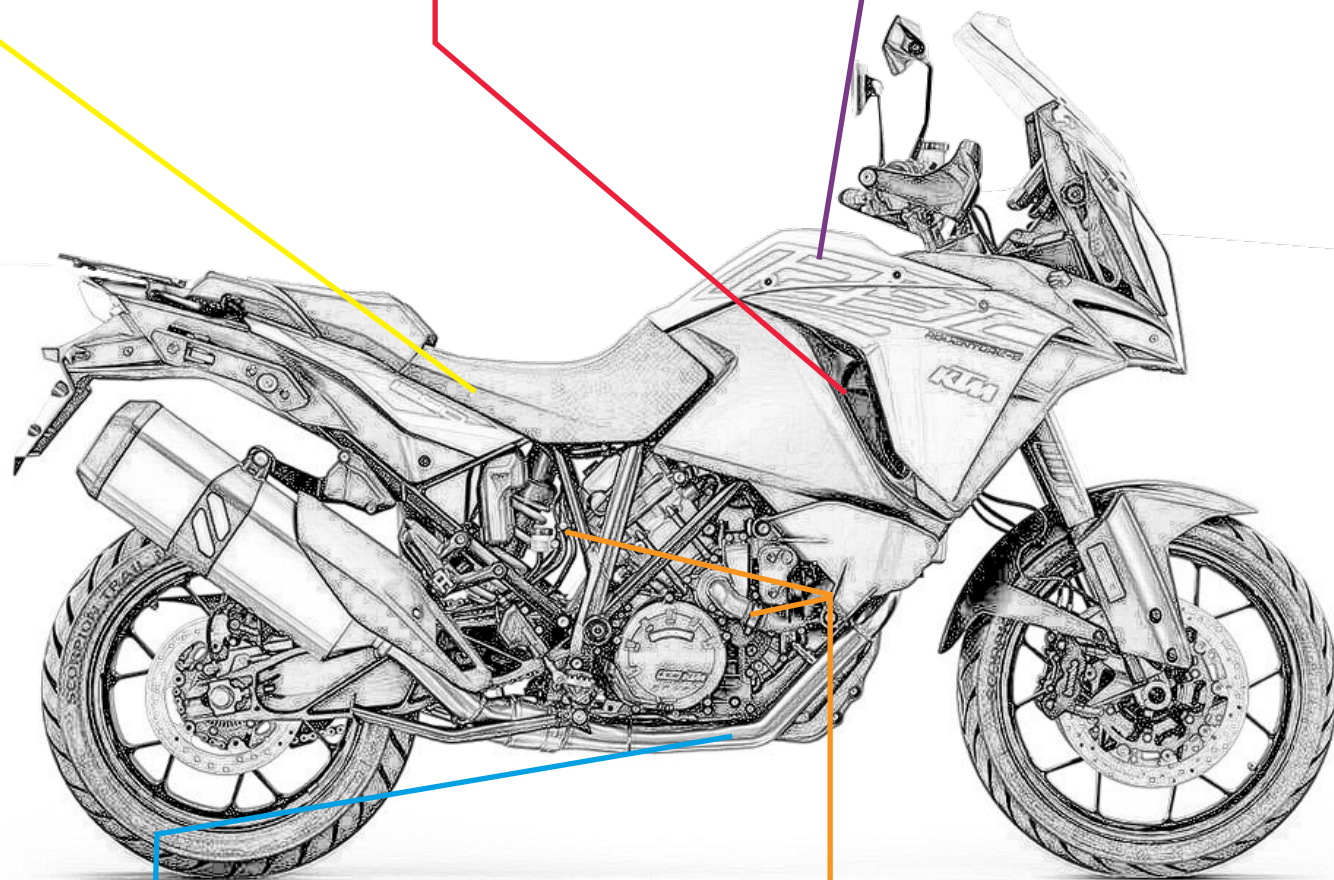
Best: Motoflect Sleeve™

● **Fuel Tank (Bottom)**

Good: HP Heatshield Mat™

Better: Motoflect Cloth™

Best: Lava Shield™



● **Exhaust Pipes & Muffler**

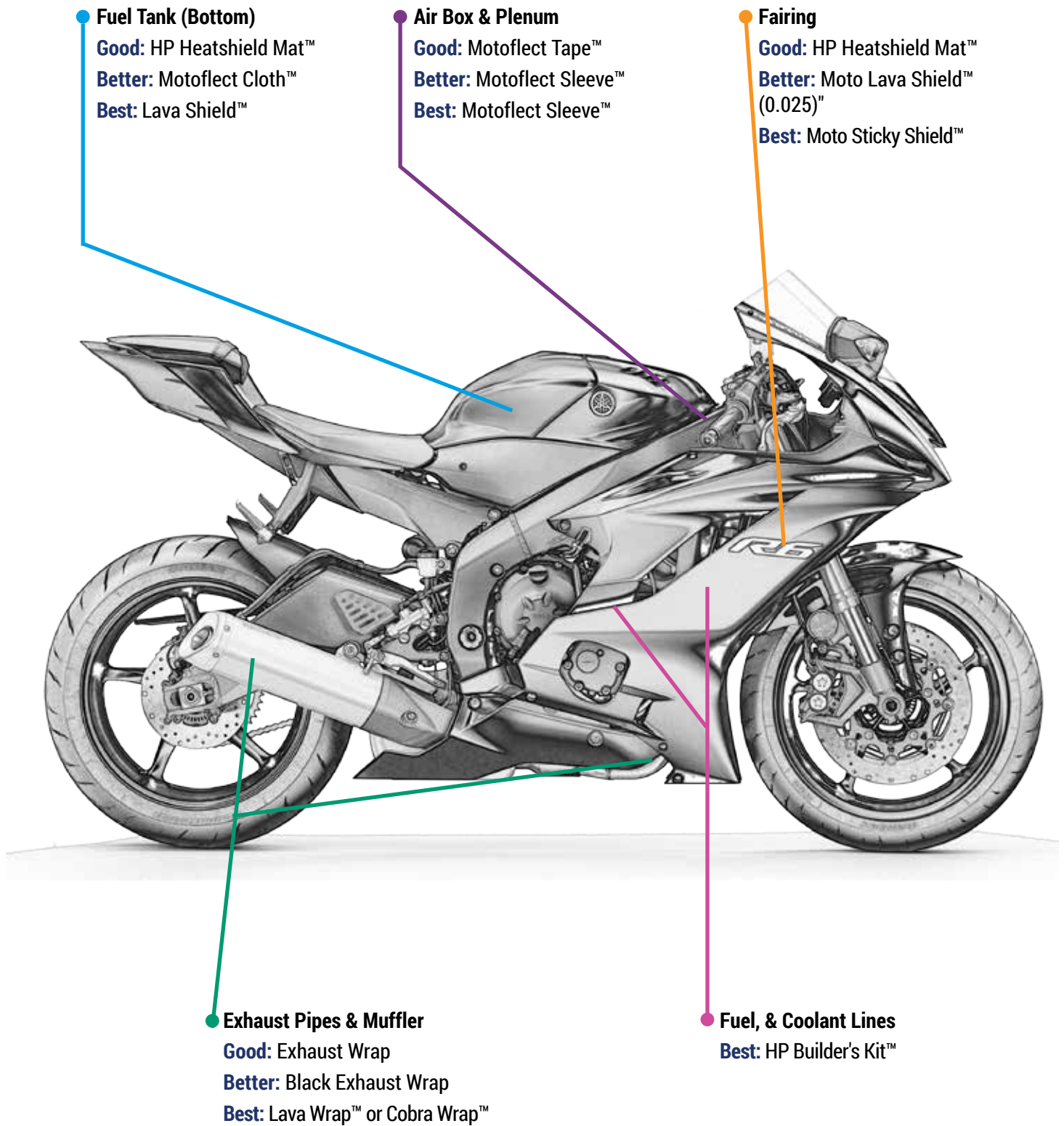
Good: Exhaust Wrap

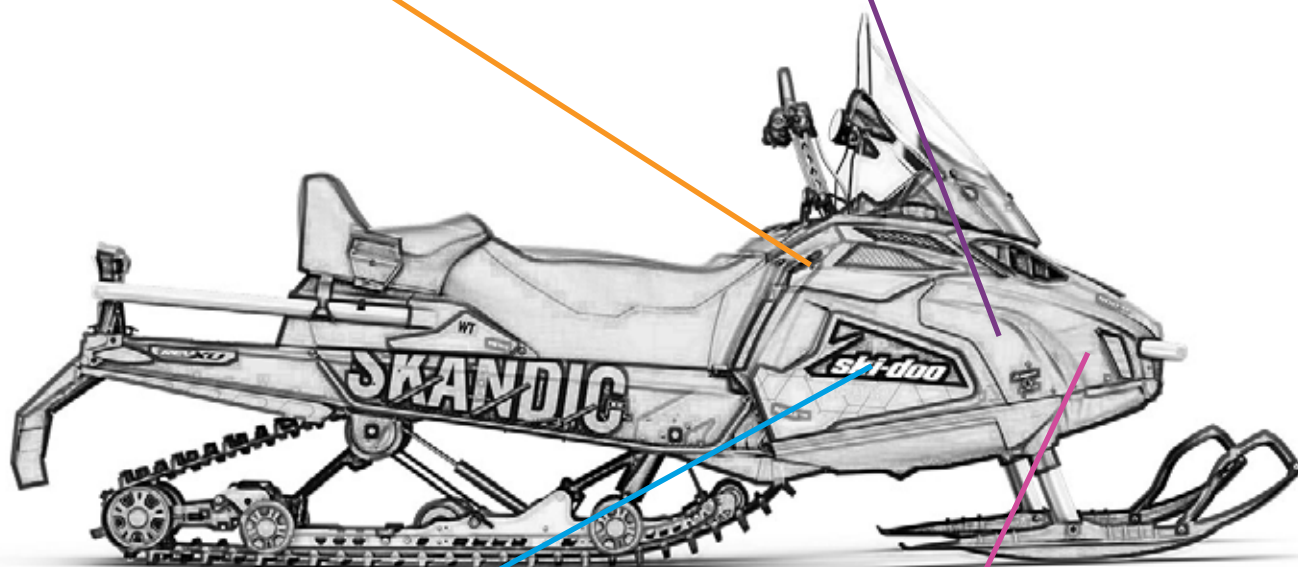
Better: Black Exhaust Wrap

Best: Lava Wrap™ or Cobra Wrap™

● **Fuel, & Coolant Lines**

Best: HP Builder's Kit™



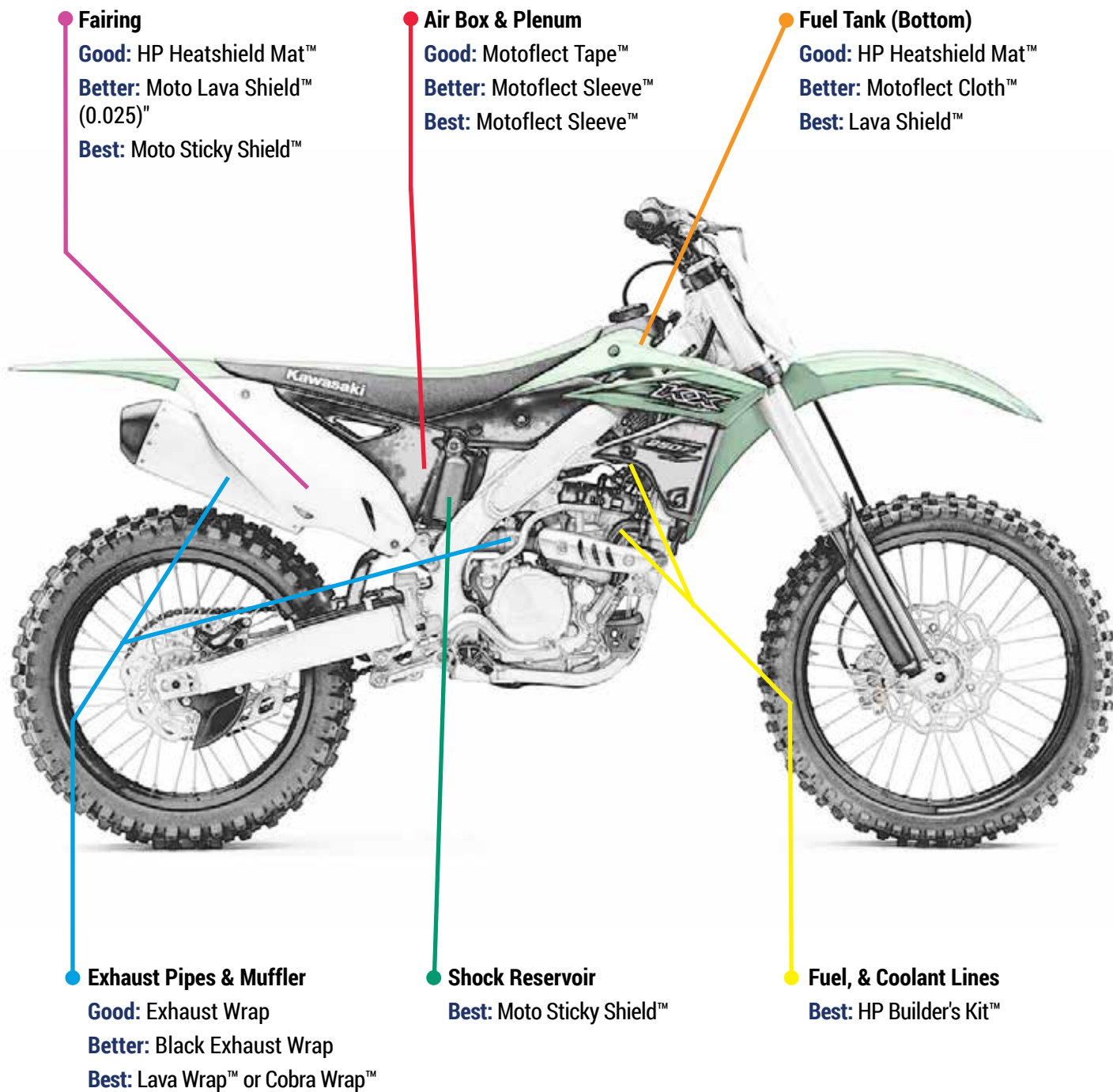


Fuel Tank (Bottom)
Good: HP Heatshield Mat™
Better: Motoflect Cloth™
Best: Lava Shield™

Fairing
Good: HP Heatshield Mat™
Better: Moto Lava Shield™ (0.025")
Best: Moto Sticky Shield™

Turbo
Best: Moto Turbo Shield™

Exhaust Pipes & Muffler
Good: Exhaust Wrap
Better: Lava Wrap™
Best: Moto Heatshield Armor™



Moto Heatshield Armor™



1800°F
CONTINUOUS



2200°F
INTERMITTENT

Don't let the heat of your exhaust slow you down. You can reduce exhaust pipe temperatures up to 60%. Our Moto Heatshield Armor™ reduces more heat than factory exhaust heat shields and wrapped exhaust pipes. Secure your way to a cooler ride in your side by side with the easiest to install and longest lasting heatshield blanket available for your pipes. The abrasion-resistant Heatshield Armor cuts effortlessly with heavy-duty scissors, making it simple to wrap around the headers. Removal of the pipes are not necessary for many installations.

Heatshield Armor™ is capable of withstanding a continuous 1,800 degrees Fahrenheit with intermittent spikes of 2,200 degrees, and it lasts longer than traditional exhaust wraps. In addition to being abrasion-resistant, Heatshield Armor has an aluminum layer that rejects chemicals and won't get snagged in that brush while off road. Because it does not completely wrap the entire header, it is compliant with most exhaust manufacturers' warranties.

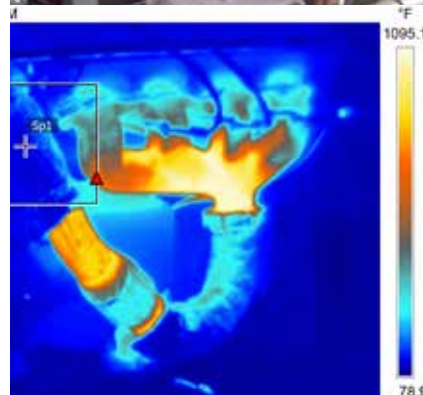
Because it stops so much more heat compared to a pipe wrap, it keeps more heat away from your shock can prevent the shock from overheating. This will offer you improved handling and prolong the shock's life. In addition to cooler shocks, it can also keep more exhaust heat from the plenum, lowering air intake temps, that means more power! Heatshield Armor™ also results in hotter and faster-flowing exhaust gases that create a scavenging effect to pull intake gases through the system quicker. This can further lower intake temperatures, resulting in even more power.

You can easily customize our Moto Heatshield Armor™ by painting the aluminum with a high-temperature engine paint.

FEATURES

- Keeps shocks and air boxes cooler
- Heatshield Armor is easily trimmed and wrapped around exhaust pipes
- Product is long lasting and abrasion resistant, with a chemical-blocking aluminum layer
- Includes locking ties
- 1/4" thick

PART NO.	DESCRIPTION
177201	12" x 10"
177205	12" x 36"
177210	6" x 15"
177211	6" x 30"



Cobra Skin™ Exhaust Wrap



Stand out in the crowd; give your motorcycle muffler wrap that real carbon fiber look. Cobra Skin exhaust muffler wrap features a special weave that gives it a carbon fiber look and make it easier to install around bends in header pipes compared to conventional exhaust wraps. The cool HPTC technology allows motorcycle pipe wraps to remain flexible and strong even at 1350-degrees Fahrenheit. It also gives our carbon fiber exhaust wrap that deep black color, no goofy sprays required! Using motorcycle exhaust wrap maintains more heat in the exhaust system; this makes exhaust gases hotter, that allows the exhaust gas to exit the system faster! This increases exhaust scavenging, pulling intake and exhaust gases through the system faster, helping to lower intake temperatures: that equals more horsepower. In some cases, the scavenging is so much, you might need to re-jet your carbs. Cobra Skin wrap also reduces radiant heat damage and can lower exhaust pipe heat by as much as 50%. The lower exhaust heat can make you, the rider more comfortable, suffer less fatigue, and allow you to enjoy your ride longer. Cobra Skin exhaust heat wrap can withstand a real world rating 1350-degrees Fahrenheit, continuous and 2000-degrees Fahrenheit intermittent.



FEATURES

- Remains soft, flexible and strong at 1,350° F
- Special weave makes it easier to wrap around bends
- Carbon-fiber appearance when installed
- Reduces underhood temperatures up to 50%

PART NO.	DESCRIPTION
380027	1 in x 25 ft
380028	1 in x 50 ft
380030	2 in x 25 ft
380032	2 in x 50 ft

Inferno Wrap™



Inferno pipe wrap will sustain the extreme temperatures that your glowing pipes from your racing snowmobile, motorcycle, cart, or other extreme riding applications require!

Tired of your alleged 2000°F exhaust thermal wrap becoming brittle and falling apart? Then this header pipe wrap is for you! Unlike other forms of heat wrap for exhaust pipes, the Inferno Header Wrap is manufactured from texturized amorphous silica filament yarn; this makes this wrap strong and flexible while operating at its designed service temp of 2000-degrees Fahrenheit continuous and 3000-degrees Fahrenheit intermittent. There is not a header or exhaust insulating wrap on the market that will take higher temperatures and last longer. Inferno header wrap maintains hotter exhaust gases, decreases the density, and that allows the exhaust gas to exit the system faster! Increased exhaust scavenging is produced: that equals more horsepower. Inferno Heat Wrap for exhaust pipes also reduces radiant heat from exhaust pipes by as much as 50 percent. Finally you can wrap that turbo snowmobile or turbo super bike and be worry free.

If you don't like the color simply spray the Inferno Header Pipe wrap with some quality exhaust paint. You don't need expensive silicone sealer spray, just walk into an auto parts store and buy an off the shelf exhaust paint in the color of your choice.

FEATURES

- Remains flexible even at 2,000° F
- Reduces underhood temperatures up to 50%
- Increases horsepower
- Great turbo-manifold wrap



PART NO.	DESCRIPTION
325001	1 in x 25 ft Roll
325002	1 in x 50 ft Roll
325025	2 in x 25 ft Roll
325050	2 in x 50 ft Roll

Lava Exhaust Wrap™



Give your header pipe and exhaust system a custom look with our Lava Exhaust Pipe Wrap. Made from crushed, melted, then fibered volcanic rock, our Lava motorcycle wrap has all the same benefits as motorcycle exhaust wrap with that trick carbon fiber look and improved durability!

Heat tape for exhaust pipes adds to rider comfort, by reducing burns caused by exhaust pipes coming in direct contact with your legs. It can even protect fairings from melting.. It can even protect fairings from melting. Lava Wrap is 25% stronger than fiberglass wraps because of the basalt fiber. Basalt is a natural mineral created from lava, it is naturally chemical and weather resistant, sometimes it has been referred to have a titanium quality because of the strength of this exhaust wrap, giving it a prolonged life and greater durability than fiberglass wraps. This rugged exhaust wrap helps retain the heat in your exhaust system, it maintains hotter exhaust gases, decreases the gas density, and allows the exhaust gas to exit the system faster! Greater exhaust scavenging is produced which lowers air intake temperatures, giving you even more horsepower. Lava Wrap also reduces radiant heat by as much as 50 percent, reducing heat to the rider, damage to fairings, and heat to shocks to help maintain optimum handling! Lava exhaust wrap is the perfect solution for your street bike, MX, UTV, ATV, or snowmobile. It withstands 1200F continuous and 2000F intermittent. This exhaust pipe insulation can be fastened with Thermal-Tie, hose clamps, or wire.



Our volcanic exhaust pipe wrap is asbestos free and is made from a base high quality basalt yarn. Lava wrap is also chemical, acid, water and fungus resistant in addition it is also noncombustible.

FEATURES

- 25% stronger than fiberglass wraps
- Reduces underhood temperatures up to 50%
- Special weave makes it easier to wrap around bends
- Carbon-fiber appearance

PART NO.	DESCRIPTION
372027	1 in x 25 ft Roll
372028	1 in x 50 ft Roll
372030	2 in x 25 ft Roll
372032	2 in x 50 ft Roll



Black Exhaust Wrap



1200°F
CONTINUOUS



2000°F
INTERMITTENT

Look cool and ride cool, with our black motorcycle exhaust wrap for your custom, cruiser, sport bike, dirt bike, metric, go-cart, or quad. Our black motorcycle exhaust wrap maintains hotter exhaust gases, decreases the density, and that allows the exhaust gas to exit the system faster! Increased exhaust scavenging is produced helping to lower intake temperatures: that equals more horsepower. Black exhaust wrap also reduces radiant heat by as much as 50%, which can reduce heat damage to fairings & keep shocks cooler. This exhaust wrap features a new proprietary black coating, it holds its color longer than similar graphite coated wraps. It can withstand 1200°F continuous and 2000°F intermittent. Our black exhaust wrap can be fastened with Thermal-Tie, hose clamps, or wire.

Our black exhaust wrap is asbestos free and is made from a base high quality fiberglass yarn. Black exhaust wrap is noncombustible, it is also water and fungus resistant

FEATURES

- Wrap reduces exhaust pipe temps up to 50 percent
- May increase horsepower
- Keeps rider cool
- Deep black coating stays black

PART NO.	DESCRIPTION
380027	1 in x 25 ft Roll
380028	1 in x 50 ft Roll
380030	2 in x 25 ft Roll
380032	2 in x 50 ft Roll



Moto Exhaust Wrap



1200°F
CONTINUOUS



2000°F
INTERMITTENT

Exhaust pipe wrap maintains hotter exhaust gases, decreases the gas density, and that allows the exhaust gas to exit the header and exhaust system faster! Increased exhaust scavenging is produced helping to lower intake temperatures: that equals more horsepower. To gain full horsepower benefits, be sure to wrap starting at the header pipe next to the cylinder head, and wrap downstream. Exhaust wrap also reduces radiant from your pipe heat by as much as 50 percent keeping your ride a much cooler one. Using exhaust pipe heat wrap can also reduce heat damage to fairings and keep shocks cooler.

This heat wrap withstand 1200-degrees Fahrenheit continuous and 2000-degrees Fahrenheit intermittent. This is a no baloney rating, don't buy a fiberglass or volcanic rock wraps that claim an continuous operating temperature above 1200-degrees Fahrenheit, someone is trying to sell you something, not solve a real problem with a real solution. For applications exceeding 1200-degrees Fahrenheit continuous use, check out our header pipe wrap. All of our exhaust pipe wraps can be fastened with stainless steel locking tie, hose clamps, or wire.

Our exhaust wrap is asbestos free and is made from a base high quality fiberglass yarn. Exhaust heat wrap is also water and fungus resistant

FEATURES

- Lowers underhood temps up to 50%
- Increases exhaust scavenging
- All rolls are 1/16" thick

PART NO.	DESCRIPTION
313027	1 in x 25 ft Roll
313028	1 in x 50 ft Roll
313030	2 in x 25 ft Roll
313032	2 in x 50 ft Roll



Moto Sticky Shield™



1100°F
CONTINUOUS



2000°F
INTERMITTENT

Is that side by side burning your backside? Look no further than our HP Sticky Shield to keep your cool on in your UTV or side by side. ATV Heat Shield has a 0.003-inch thick armor layer combined with dense fiberglass insulation and high strength adhesive backing. The armor layer protects this side by side heat shield from mud, water, snow, and other elements while the dense fiberglass handles the ATV heat shielding. Included edging tape seals the edges of the insulation, making this stick on heat shield capable of being cleaned without coming apart! This UTV fire wall and trunk heat shield is capable of reflecting up to 90 percent of radiant heat.

This product is designed to be stuck on the "cold side" of a body panel, with the aluminum side facing the heat source. Line that tunnel or firewall to drop interior temps. How about lining the underneath your trunk to prevent your beverages from getting too hot or prevent that extra fuel can from boiling. Now you can finally take your ATV or UTV, keep your cool, and clean it without worry.

Please note: This product ships folded or rolled to keep shipping costs down. You may see bends in it upon arrival, but the bends will become minimally visible after installation.

FEATURES

- Capable of reflecting over 90% of radiant heat
- Flexible, bends and conforms to almost any shape
- Perfect for Side by Sides, UTVs, and ATVs
- Adhesive backing sticks to almost any clean surface
- Can be cleaned after installed



PART NO.	DESCRIPTION
180001	10 in x 11 in, Seat pan "
180002	12 in x 23 in
180003	23 in x 24 in

Moto Stage Shield™



200°F
CONTINUOUS



250°F
INTERMITTENT

Don't let your bike's fuel get hot while waiting for your turn to dominate the race track! Our latest innovation is the HP Stage Shield. Pro tuners and national teams know that hot fuel will cause poor performance, vapor lock and fuel evaporation. Preventing evaporation preserves the critical chemical balance of your fuel, allowing your bike to perform at your tuned settings for longer periods of time. This lightweight reflective heat shield provides motorcycle fuel protection and can lower your fuel temperature by as much as 20°F vs. an unprotected sun baked bike! Use our HP Stage Shield in staging, on the starting line, in the pits, back at camp, or anywhere your bike sits in the sun. HP Stage Shield offers serious fuel protection for MX, SUPERMOTO, MINI and ATV RACING machines...Get that edge in your racing program.

FEATURES

- Reflects solar radiation, keeping fuel cool
- Lowers fuel temperature by as much as 20°F
- Keeps fuel's chemical balance in tact
- Prevents fuel evaporation



PART NO.	DESCRIPTION
900701	MX, ATV, Tanks

Lava Shield™



1200°F
CONTINUOUS



2000°F
INTERMITTENT

Your extreme ride on the rail deserves some extreme heat shield protection. Made from crushed volcanic rock, our Lava Shield reflects and dissipates heat with that trick carbon fiber look! Due to basalt's (mineral from volcanic rock) natural chemical and acid resistant properties, our Lava motorcycle heat shields are excellent for use in harsh environments. Unlike aluminized cloth heat barriers, Lava Shield will not come apart if you pressure wash and clean your bike or UTV. Water can sneak in behind a laminated foil and begin to separate it from the fiberglass backing. Heat shield motorcycle lava shields have no such problem; they're a single fiber barrier, getting them soaking wet will do no harm. Do not fear that water hazard, plow right on through and remain cooler on the other side.



Is that custom exhaust system almost touching that fairing? Use the thick (0.025") Lava carbon fiber styled heat shield to protect your fairing from letting. Use Lava Shield under your fuel tank as an OEM upgrade replacement to prevent your fuel from boiling. Lava Shield Heavy Duty when there are instances of little air flow, making it a superior insulator to aluminum and gold barriers fabrics in these applications. These Lava Shields work as highly effective fuel tank & motorcycle fairing heat shield.

We do not recommend using a pressure washer directly on Lava Shield, but contact with water is just fine.

FEATURES

- Heat shield with carbon fiber look
- Capable of reducing up to 80% of radiant heat
- Helps shield fuel tanks and fairings
- Adhesive backing sticks to almost any clean surface (not recommended for rough or unfinished fiberglass/carbon)

PART NO.	DESCRIPTION
770010	0.007 thk x 12 in x 24 in Fuel tank shield
770011	0.007 thk x 24 in x 24 in, heat shield
770012	0.007 thk x 36 in x 48 in, UTV heat shield
781011	0.025 thk x 23 in x 24 in, fairing heat shield



Thermaflect Cloth™



1100°F
CONTINUOUS



2000°F
INTERMITTENT

Thermaflect Cloth™ is a heatshield with a high-quality mirror-like finish compared to most other reflective aluminized cloth mats. In addition, it weighs 40 percent less than comparable aluminized fiberglass cloth products. When used in applications when there is 1 inch of airspace and good airflow, Thermaflect Cloth™ is capable of reflecting 90 percent of radiant heat. The mirror-like finish and lightweight construction will blow the gold vinyl sticker stuff away with its reflectivity. Use it as a heatshield under the hood on a fuel cell, on aluminum intercooler pipes or for the air-filter box, or turn your aftermarket intake into a real cold-air intake! This product withstands 1,100 degrees F of radiant heat (requires minimum of 1 inch of airspace) and up to 450 degrees F of direct heat. To install it, face the aluminized side toward the source of heat to shield heat away. Thermaflect Cloth™ is available with a high-temperature peel-and-stick adhesive that will adhere to almost any clean surface. It is not recommended for rough, unfinished fiberglass or carbon fiber.



FEATURES

- Capable of reducing up to 90% of radiant heat
- Adhesive sticks to most clean surfaces; not recommended for rough/unfinished fiberglass
- Helps shield firewalls, hoods, body panels and floorboards
- Bulk rolls and custom widths available; minimums apply

PART NO.	DESCRIPTION
710040	36" x 58" non-adhesive
711002	24" x 26" w/self-adhesive (ships folded)
711005	36" x 58" w/self-adhesive

Moto Heatshield Mat™



1100°F
CONTINUOUS



2000°F
INTERMITTENT

Moto Heatshield Mat is a heat shield for the bottom of your fuel tank, air box, fairings, bags, and seat bottom. It offers fuel tank protection and prevents your fuel from boiling, stops pre-ignition, prevents critical components of your fuel from evaporating. This can prevent vapor lock and helps to keep your bike performance as crisp as it was when you started the race. You can also use this as a heat shield on your air box, to lower air intake temperatures by shielding radiant heat from your exhaust and shock. This will further improve the efficiency of your motor and create more horsepower as well as provide fairing protection. Moto Heatshield Mat can also be used as a fairing heat shield, helping to prevent them from melting and ruining paint. It can also be used as a heat shield for the bottom of your seat or on the bags on your custom cruiser. Face the aluminized side toward the source of radiant heat (we recommend a minimum 1" of airspace) to shield heat away. This product withstands 1100-degrees of radiant heat and up to 450-degrees Fahrenheit of direct heat. It cuts easily with a pair of scissors, and the high temperature peel and stick adhesive will stick to any clean surface.



To add increased life and protection, line the outside edge of our Moto Heatshield Mat with our Moto Shield Tape. This will protect it when using a high power washer and help prevent water damage to mat.

FEATURES

- Lowers fuel temperature by as much as 10°F

PART NO.	DESCRIPTION
721006	0.032 thk x 18 in x 18 in
721010	0.032 thk x 12 in x 24 in, tank heat shield
721011	0.032 thk x 24 in x 24 in fairing heat shield
721013	0.032 thk x 24 in x 48 in

Moto Turbo Shield™



1800°F
CONTINUOUS



2200°F
INTERMITTENT

Heatshield Products Moto Turbo Shield™ was designed for and tested to manage heat on the most hardcore turbocharged racing applications. Moto Turbo Shield™ reduces turbo lag while protecting other engine components and reducing radiant temperatures. Available for small turbos and turbofolds that are popular on side by sides and high speed sport bikes. Keeping the heat inside the turbo can keep that cargo area cooler and prevent fairings from melting.

Moto Turbo Shield™ is a custom fit and uses extreme-temperature materials to keep heat in the hot side of the turbo where it belongs. The Lava Turbo Heat Shield™ has a rugged outer layer of our Lava Shield™ material that is 25 percent stronger than comparable fiberglass shields, giving a longer life span. The Lava Shield material is also highly water and UV resistant. The silica contact layer and silica insulation make Moto Turbo Shield™ capable of withstanding 1,800 degrees F continuous. We use a ½-inch-thick BioCool thermal-barrier inner pad sandwiched between heavy-duty foil, bound and sewn together with a stainless steel mesh at the edges. BioCool is a non-caustic, non-flammable thermal barrier. The precision-fit design means you do not have to trim or fit the heatshield blanket to your turbo housing, making installation a snap.



FEATURES

- Capable of reducing up to 60% of turbo-generated underhood heat
- Reduces turbo lag and chatter while increasing boost
- Does not conduct heat to “cold side” like metal turbo shields
- Precision fit; installs in minutes without trimming or cutting
- Custom shields available; will require housing to make prototype

PART NO.	DESCRIPTION
M300090U	Small T2, EFR turbines
M300071R	Polaris Turbo Rzr

HP Builder's Kit™



Old school looks with modern Heatshield technology! HP Heat Shield Kits feature a heat protective thermal sleeving capable of withstanding 1200-degrees Fahrenheit continuously. This nonflammable sleeve has a special weave that allows it to expand and contract over fittings, terminals, and more. These sleeves can protect fuel lines, preventing vapor lock. They can also be used to protect wires from heat damage and allow you to hide your wiring. The 1/2-inch id sleeve is ideal for shielding most Harley and motorcycle fuel lines, helping to stop vapor lock and improve performance. The smaller 5/16 inch sleeve is great for small wire looms and brake lines. The 5/8 inch inside diameter sleeves are ideal for protecting your oil lines from heat damage caused by being too close to the motor or exhaust. Try the 1-1/4 inch inside diameters sleeves for your sport and moto bike radiator lines. So add some heat protection and make your ride a cooler one with this fuel line heat shield!



FEATURES

- Continuous operating temperature of 1100°F, 2000°F intermittent
- Capable of reducing up to 60% of radiant heat
- Special weave that allows it to expand and contract over fittings
- Helps to prevent vapor lock, protects wires from melting, shields oil and brake lines

PART NO.	DESCRIPTION
204002	1/2 id x 2 ft Roll
204003	5/16 id x 2 ft Roll
204008	5/8 id x 2 ft Roll
204009	5/8 id x 6 ft Roll



Moto Pipe Wrap Tie™



1800°F
CONTINUOUS



2200°F
INTERMITTENT

Keep your wrap tight on your pipes with our Thermal-Ties. Our stainless steel locking pipe wrap ties are the easiest and best way to fasten any type of high temperature insulation, use in any application where high strength fastener is needed. Easy to use; no bands or buckles required! Simply pull the tail end through the head and tighten, just like plastic wire ties. There are no sharp edges and are easy to handle. The low profile makes them ideal for any tight fit application. We offer our standard 3/16" width 304 stainless steel tie, and our heavy duty 5/16" wide 316 stainless steel tie, with 45% more gripping power. Both come in a variety of lengths to suit your needs, and they both have a thickness of .010"

FEATURES

- Continuous operating temperature of 1800°F
- 304 and 316 stainless steel locking ties
- .010" thick
- No special tools needed

PART NO.	DESCRIPTION
350090	3/16" W x 8" L; 6 pack
350091	3/16" W x 10" L; 6 pack
350092	8" (x6) & 14" (x2)



Heatshield Armor Tape™



1100°F
CONTINUOUS



2000°F
INTERMITTENT

Our heat shield tape is a must have for your race track tool box! This motorcycle air box wrap reflects up to 90% of radiant heat away from wires, lines, intake pipes, cables, hoses, and more! It is an excellent way to insulate components without disassembly, or it may be used as a means to hold other thermal insulation in place. Thermafect Tape is also excellent as a quick on the go solution to heat problems. Durable cloth construction makes it longer lasting and more rugged than similar products. This reflective heat shield tape withstands 1100-degrees Fahrenheit continuous radiant heat (requires minimum of 1 inch of airspace) and 500-degrees Fahrenheit of direct contact. The reflective heat shield tape cuts easily and installation is simple with our high temperature self-adhesive backing that sticks to any CLEAN surface. Wider heat shield tape rolls available up to 150 feet long, minimums will apply.



FEATURES

- Continuous operating reflective temperature of 1100F, 2000F intermittent
- Capable of reducing up to 90% of radiant heat
- Adhesive backing sticks to almost any clean surface
- Helps shield fuel lines, brake lines, wire looms, and more from radiant heat.

PART NO.	DESCRIPTION
341001	1-1/2 in x 3 ft
341005	1-1/2 in x 20 ft
341007	4 in x 10 ft

Moto Foil Tape™



1000°F
CONTINUOUS



2000°F
INTERMITTENT

This light weight thermal insulating tape reflects radiant heat away from wires, lines, cables, and more on your motorcycle. Thermal Insulated Tape is an excellent way to insulate components without disassembly, or use it as a means to finish off other forms of thermal insulation to prevent fraying. This foil tape is very economical compared to other forms of heat insulation tape, cuts easily, and has a self-adhesive backing that sticks to any clean surface. This reflective heat shield tape withstands 1000-degrees Fahrenheit of continuous radiant heat and up to 400-degrees Fahrenheit direct contact



FEATURES

- Continuous operating reflective temperature of 1000°F
- Capable of reducing up to 80% of radiant heat
- Adhesive backing sticks to almost any clean surface
- Perfect for lining under tank heat shields!

PART NO.	DESCRIPTION
341101	1" x 10'

Lava Oil Filter Shield™



1200°F
CONTINUOUS



2000°F
INTERMITTENT

The Lava Oil Filter Shield™ from can help you avoid cooking the oil filter and the oil running through it while protecting the filter from road debris. Oil filters are often located in close proximity to turbo manifolds, header pipes, and exhaust pipes in an area of the vehicle that doesn't get much air movement. A prime example are side by sides and UTV's.

Lava Oil Filter Shield protects the oil filter from ambient heat and road debris by encasing the oil filter in the proprietary Lava Shield™ volcanic rock fiber-based thermal barrier material. The specially designed cover slides over the filter snugly and is held in place by magnets so it won't slip off, which also allows it to be removed when necessary. The magnets are effective at trapping metal debris inside the oil filter, further improving the filtration and offering your engine more protection. The Lava Oil Filter Shield can withstand constant temps of 1,200-degrees Fahrenheit and intermittent temps up to 2,000-degrees. It is oil, solvent and water resistant.

High heat generated by the exhaust system can saturate the oil filter, which adversely affects the temperature of the oil running through the filter, as well as the filter internals. In addition, the usual mounting location of the oil filter exposes it to on and off-road debris that can potentially puncture the filter, cause oil loss and engine failure. Lava Oil Filter Shield protects the oil filter from heat and road debris.



FEATURES

- Special design allows for easy install and removal allowing reuse after oil changes
- Includes magnets which holds the shield in place and trap metal debris in the filter
- Water, oil, acid, and solvent resistant

PART NO.	DESCRIPTION
504701	Fits Ford Mod Motor/Late Model CHRY/Dodge Hemi Fram PH2 or equivalent
504702	Fits Early Ford/GM V8, Fram PH8A/PH5 or equivalent



Cool Can Shields™



1100°F
CONTINUOUS



2000°F
INTERMITTENT

HP Cool Can Shields™ act as a UV heatshield for your fuel container or jug, and protect its contents from solar radiation that causes the contents to get hot. Fabricated from a lightweight aluminized material, HP Cool Can Shields™ help keep the fuel inside the jug cool, reducing evaporation while maintaining the fuel's chemical balance; important for any fuel and critical with racing fuel. Jugs covered with HP Cool Can Shields™ have cooler fuel temperatures by as much as 20 degrees versus unprotected fuel containers. In addition, HP Cool Can Shields™ will also increase the life expectancy of the fuel jug by 50 percent by significantly reducing UV sun damage.

FEATURES

- Reflects solar radiation, keeping fuel cool and stable while preventing evaporation
- Cooler fuel temperatures by as much as 20 degrees
- Keeps fuel's chemical balance intact and within spec
- Increases fuel jug life by 50 percent through significantly reduced UV exposure



PART NO.	DESCRIPTION
900210	Scribner® 5 gal. square-can heatshield
900211	VP® 5 gal. round-can heatshield
900212	VP® 5 gal. square-can heatshield
900213	54 gal. fuel-drum heatshield
900215	Hunsaker® 11 gal dump can





HEATSHIELD WELDING PRODUCTS

It didn't take too long for us to realize that in addition to helping you tame and manage the heat on your ride, our products can also be used to abate heat in your welding projects. We've engineered a number of proprietary materials to tackle the most common issues that professional and hobby builders encounter. We also listened to welders, in addition to drawing from our own experiences, to create unique products to help make welding more comfortable, more productive and safer.

HP Welding Pillow™



500°F
CONTINUOUS



SLAG
INTERMITTENT

The HP Welding Pillow™ prevents fatigue while performing extensive welding. Featuring an outer layer of our HP Weld Mat™ or RugGold Mat™, these pillows are abrasion-resistant and resistant to liquid, equaling a long life. The Welding Pillow™ also provides protection against metal splashes, flames, sparks and ultraviolet radiation, while the inner non-flammable fiberglass insulation provides comfort. For welding and manufacturing, you can improve worker efficiency by reducing fatigue; the pillow helps steady the hand because of the increased comfort and reduction in strain. Available in both the gray HP Weld Mat™ and our exclusive RugGold™ Mat both can be cleaned with a diluted bio-degradable de-greaser.

FEATURES

- Less fatigue means better welds
- Great for under-vehicle repairs

PART NO.	DESCRIPTION
932001	10" x 10" x 3" Grey
932002	12" x 18" x 3" Grey
932004	24" x 36" x 3" Grey
932011	6" x 4.5" x 3" Gold Wrist Pillow
932012	10" x 8" x 3" Gold
932013	12" x 12" x 3" Gold



Glove Armor™



1800°F
CONTINUOUS



2200°F
INTERMITTENT

Heatshield Glove Armor™ gives your hands extra protection during high-temp TIG welding jobs. The Glove Armor™ TIG finger shield fits over most standard welding gloves, providing extra protection for the outside of your hands, pinkie and wrist letting you weld longer with more comfort and control. This allows you to stay in the "dime zone" longer for better welds and more efficient welding work.

Glove Armor™ slides over your glove and secures around your wrist with a sturdy strap. This TIG finger heat shield is designed to withstand extreme heat (constant 1800F, intermittent 2200F) without melting onto the surface. The HP Felt is extremely efficient at displacing thermal energy. The "Gold Finger" version has an inner liner of our exclusive RugGold™ shield, this gives it a little more grip to your glove and another layer of protection. Glove Armor™ also allows you to brace your hand on parts that are hot enough to cause burning to your skin even through the typical welding glove.

FEATURES

- Protects pinkies and sides of hand
- Fits over most welding gloves
- Less fatigue means better welds



PART NO.	DESCRIPTION
932021	Black
932022	Black & Gold

HP Torch Blanket™



1800°F
CONTINUOUS



2200°F
INTERMITTENT

HP Torch Blanket™ makes it convenient to perform repair welds on industrial equipment and vehicles without disassembly. This can reduce production downtime by not having to turn off equipment, or return vehicles to the shop, saving time during race preparation. The blanket can even be used as a blaze barrier for welding pipes or tubes together. HP Torch Blanket™ is made of our Stealth Felt, making it more durable and longer lasting than traditional welding blankets (up to 10 times more compared to leather blankets). We have included brass grommets at the corners to make it handy to mount anywhere a quick repair is needed. You can even use the HP Torch Blanket™ as a blaze barrier when sweating or welding pipes around the house or on the construction site. The HP Torch Blanket™ is black with a dark gray binder, and is capable of withstanding 1,800 degrees F continuous heat. Custom sizes are available.



FEATURES

- Protects components while repairs are made
- The torch can touch the Torch Blanket™
- Makes it convenient to make repair welds on industrial equipment and vehicles without disassembly

PART NO.	DESCRIPTION
931018	18" x 18" w/ grommets
931019	18" x 18"
931020	18" x 18" w/ key hole

PART NO.	DESCRIPTION
931022	18" x 18" w/ magnets
931025	26" x 36"
931053	53" x 72"



HIGH PERFORMANCE INSULATION



Made in the USA
Established in 1985

Heatshield Products, Inc.

www.heatshieldproducts.com/moto | info@heatshieldproducts.com | (760) 751-0441

Facebook: @HeatshieldProducts | Twitter: @HeatshieldProds

Instagram: @HeatshieldProducts | Google+: +HeatshieldProducts

#RaceTested

© Heatshield Products, Inc.